

ALTO I

LAST DANCE

SLOWLY

Musical staff with treble clef, common time signature, and a melodic line of eighth and quarter notes with slurs and accents.

A

Musical staff with bass clef, common time signature, and a bass line with rests and a "2" above the staff.

DISCO TEMPO
d = 142

B

Musical staff with bass clef, common time signature, and a bass line with whole notes and slurs.

mp

Musical staff with treble clef, common time signature, and a melodic line with slurs and accents.

C (S)

Musical staff with bass clef, common time signature, and a bass line with triplets and slurs.

mp

mp

Musical staff with bass clef, common time signature, and a bass line with whole notes and slurs.

mp

Musical staff with bass clef, common time signature, and a bass line with whole notes and slurs.

Musical staff with treble clef, common time signature, and a melodic line with slurs and accents.

D ms

Musical staff with bass clef, common time signature, and a bass line with whole notes and slurs.

ms

Musical staff with bass clef, common time signature, and a bass line with whole notes and slurs.

WARNER BROS
© 1978

LAST DANCE - ALTO - I - P. 2.

E
mp

Handwritten musical notation for the first system. It consists of five staves. The first staff has a treble clef, a key signature of one flat (B-flat), and a common time signature. It begins with a box containing the letter 'E' and a dynamic marking 'mp'. The first staff contains a melodic line with a long slur over it. The second and third staves contain accompaniment with various note values and rests. The fourth staff has a whole rest. The fifth staff continues the melodic line and ends with a double bar line and a fermata. A dynamic marking 'mp' is also present on the fifth staff.

CODA
mf

Handwritten musical notation for the CODA section. It consists of two staves. The first staff has a treble clef and a common time signature. It begins with a box containing the word 'CODA' and a dynamic marking 'mf'. The notation includes notes, rests, and slurs. The second staff continues the melodic line and ends with a double bar line and a fermata.

RIT.

ALTO 2

LAST DANCE

SLOWLY

Musical staff with treble clef, 4/4 time signature, and dynamic marking *mp*. The staff contains a melodic line with various accidentals and a fermata over the final measure.

A

Musical staff with treble clef, 4/4 time signature, and dynamic marking *p*. It features a fermata over the first measure and a tempo change to DISCO TEMPO.

DISCO TEMPO
♩ = 142

Musical staff with treble clef, 4/4 time signature, and dynamic marking *p*. It features a fermata over the first measure.

B

Musical staff with treble clef, 4/4 time signature, and dynamic marking *mp*. It features a fermata over the first measure.

Musical staff with treble clef, 4/4 time signature, and dynamic marking *mf*. It features a fermata over the first measure.

C

Musical staff with treble clef, 4/4 time signature, and dynamic marking *mp*. It features a fermata over the first measure and a tempo change to 3/4.

Musical staff with treble clef, 4/4 time signature, and dynamic marking *mp*. It features a fermata over the first measure.

Musical staff with treble clef, 4/4 time signature, and dynamic marking *mf*. It features a fermata over the first measure.

D

Musical staff with treble clef, 4/4 time signature, and dynamic marking *mf*. It features a fermata over the first measure.

Musical staff with treble clef, 4/4 time signature, and dynamic marking *mf*. It features a fermata over the first measure.

WARNER BROS.
© 1978

LAST DANCE - ALTO 2 - P. 2.

E

Musical notation for the first system, including a treble clef, a key signature of one flat, a common time signature, and dynamic markings like *mp*. The notation consists of three staves with various notes, rests, and slurs.

8

Musical notation for the second system, including a treble clef, a key signature of one flat, a common time signature, and dynamic markings like *mp* and *f*. The notation consists of two staves with various notes, rests, and slurs. The second staff ends with the instruction "D.S. AL CODA".

CODA

Musical notation for the CODA section, including a treble clef, a key signature of one flat, a common time signature, and dynamic markings like *mf* and *f*. The notation consists of two staves with various notes, rests, and slurs.

RIT.

f

TENOR I

LAST DANCE

SLOWLY

Handwritten musical score for Tenor I. The score is written on ten staves, organized into five systems (A-E).
- System A: Treble clef, key signature of one flat (B-flat), tempo marking 'SLOWLY', dynamic 'mp'. Includes a bass line with an 8-measure rest.
- System B: Treble clef, dynamic 'mp'. Includes a bass line with a 3-measure rest.
- System C: Treble clef, dynamic 'mp'. Includes a bass line with a 3-measure rest.
- System D: Treble clef, dynamic 'mf'. Includes a bass line with a 3-measure rest.
- System E: Treble clef, dynamic 'mp'. Includes a bass line with a 3-measure rest.
A box in the second system contains the text: 'DISCO TEMPO' and '♩ = 142'.
A circled 'S.' is written above the first staff of system C.

WARNER BROS.
© 1978

LAST DANCE - TENOR I - P. 2.

SOLO - 1ST X ONLY

DM C6 Bbm7 A7 DM C6 Bbm7 A7

DM C6 Bbm7 A7 DM C6 Bbm7 A7

TO E

D.S. AL CODA

CODA

mf

f

Rit.

TENOR 2

LAST DANCE

SLOWLY

A *mp* *16* **DISCO TEMPO** *J = 142* *2*

B *mp*

C *mf* *3* *mp* *3* *mp*

D *mf* *mp*

WARREN BROS
© 1978

LAST DANCE - TENOR 2 - P. 2.

E *mp*

mp

f

D.S. AL CODA

CODA *mp*

mp

f

RIT.

BARITONE

SLOWLY

LAST DANCE

Handwritten musical score for Baritone, titled "LAST DANCE". The score is divided into four sections: A, B, C, and D. Section A begins with a treble clef, a key signature of one flat (B-flat), and a common time signature (C). The first staff has a dynamic marking of *mp*. Section B starts with a new key signature of one flat (B-flat) and a common time signature (C). Section C features a key signature change to two flats (B-flat and E-flat) and includes a circled "f." marking and a triplet of eighth notes. Section D is in two flats (B-flat and E-flat) and includes a circled "ff." marking. A tempo instruction "DISCO TEMPO" with a quarter note equal to 142 is written above the second staff. The score concludes with a double bar line and a fermata.

WARNER BROS.
© 1978

LAST DANCE - BARI - P. 2.

E

Handwritten musical score for the first system. It begins with a treble clef and a common time signature (C). A dynamic marking of *mp* (mezzo-piano) is present. The first staff contains a half note followed by a quarter note, then a half note with a slur over it. The second staff continues with a half note, a quarter note, and a half note with a slur. The third staff has a quarter note, a half note, and a quarter note with a slur. The fourth staff features a half note, a quarter note, and a half note with a slur. The fifth staff has a half note, a quarter note, and a half note with a slur. The sixth staff contains a quarter note, a half note, and a quarter note with a slur. The seventh staff has a quarter note, a half note, and a quarter note with a slur. The eighth staff features a quarter note, a half note, and a quarter note with a slur. The system concludes with a double bar line and a box containing the text "D.S. AL CODA".

CODA

Handwritten musical score for the second system. It begins with a treble clef and a common time signature (C). A dynamic marking of *mp* (mezzo-piano) is present. The first staff contains a quarter note, a half note, and a quarter note with a slur. The second staff has a quarter note, a half note, and a quarter note with a slur. The third staff features a quarter note, a half note, and a quarter note with a slur. The system concludes with a double bar line.

RIT.

Handwritten musical notation for a ritardando (RIT.) section, consisting of a wavy line on a staff.

TRUMPET I

SLOWLY

LAST DANCE

FLUG.

Musical staff with treble clef, key signature of one flat (Bb), and dynamic marking *mp*. A box labeled **A** is at the beginning. A box labeled **FLUG.** is at the end. A large slur covers the entire staff. A circled **8** is written below the staff.

mp

TO TRUMPET

4

DISCO TEMPO
♩ = 142

2

B

Musical staff with treble clef, key signature of one flat (Bb), and dynamic marking *mp*. A large slur covers the staff.

mp

C

Musical staff with treble clef, key signature of one flat (Bb), and dynamic marking *mp*. A circled **8** is written below the staff.

4

mp

FLUG.

mp

D

Musical staff with bass clef, key signature of one flat (Bb), and dynamic marking *mp*. A box labeled **4** is written below the staff.

Musical staff with treble clef, key signature of one flat (Bb), and dynamic marking *mp*. A circled **8** is written below the staff.

LAST DANCE - TRPT. I - P. 2.

E

Handwritten musical notation for the first system, featuring a treble clef, a key signature of one flat (B-flat), and a common time signature. The notation includes a melodic line with a slur and a dynamic marking of "mf". The bass line consists of chords with a "2" above them. A fermata is placed over the first measure of the melodic line.

8

4

Handwritten musical notation for the second system, continuing the melodic and harmonic lines. It includes a dynamic marking of "mf" and a boxed instruction "D.S. AL CODA" at the end of the system.

f

CODA

Handwritten musical notation for the CODA section, starting with a treble clef and a key signature of one flat. It features a dynamic marking of "mf" and a "RIT." (ritardando) instruction with a wavy line below the staff.

TRUMPET 2

SLOWLY

LAST DANCE

FLUG.

A

mp

8

Musical notation for section A, second staff

mp

TO TRUMPET 4

DISCO TEMPO

$\downarrow = 142$

2

B

mp

C

mp

f

8

ms

4

mp

ms

D

ms

LAST DANCE - TRPT. 2 - P. 2.

E

Handwritten musical notation for the first system, featuring a treble clef with a key signature of one flat (Bb) and a 2/4 time signature. The first staff contains a whole note chord and a half note melody. The second staff contains a whole note chord and a half note melody. Dynamics include 'mf' and 'f'.

Handwritten musical notation for the second system, featuring a treble clef with a key signature of one flat (Bb) and a 2/4 time signature. The first staff contains a whole note chord and a half note melody. The second staff contains a whole note chord and a half note melody. Dynamics include 'mf' and 'f'. A box labeled "SOLO 2ND X ONLY" is present above the second staff.

Handwritten musical notation for the third system, featuring a treble clef with a key signature of one flat (Bb) and a 2/4 time signature. The first staff contains a whole note chord and a half note melody. The second staff contains a whole note chord and a half note melody. Dynamics include 'mf' and 'f'. A box labeled "SOLO 2ND X ONLY" is present above the second staff.

Handwritten musical notation for the fourth system, featuring a treble clef with a key signature of one flat (Bb) and a 2/4 time signature. The first staff contains a whole note chord and a half note melody. The second staff contains a whole note chord and a half note melody. Dynamics include 'mf' and 'f'.

Handwritten musical notation for the fifth system, featuring a treble clef with a key signature of one flat (Bb) and a 2/4 time signature. The first staff contains a whole note chord and a half note melody. The second staff contains a whole note chord and a half note melody. Dynamics include 'mf' and 'f'. A box labeled "D. S. AL CODA" is present above the second staff.

CODA

Handwritten musical notation for the CODA section, featuring a treble clef with a key signature of one flat (Bb) and a 2/4 time signature. The first staff contains a whole note chord and a half note melody. The second staff contains a whole note chord and a half note melody. Dynamics include 'mf' and 'f'.

RIT.

TRUMPET 3

SLOWLY

LAST DANCE

FLUG.

Musical notation for section A, starting with a Flageolet (FLUG.) instruction and a mezzo-piano (mp) dynamic. The notation includes a treble clef, a key signature of one flat, and a 4/4 time signature. The melody consists of four quarter notes: F, G, A, B.

A

Musical notation for section B, starting with a mezzo-piano (mp) dynamic. The notation includes a treble clef, a key signature of one flat, and a 4/4 time signature. The melody consists of eighth and quarter notes. A box labeled "DISCO TEMPO" with a quarter note equal to 142 is present. A "TO TRUMPET" instruction with a 4-measure rest is also shown.

B

Musical notation for section C, starting with a mezzo-piano (mp) dynamic. The notation includes a treble clef, a key signature of one flat, and a 4/4 time signature. The melody consists of quarter notes: F, G, A, B.

C

Musical notation for section D, starting with a mezzo-piano (mp) dynamic. The notation includes a treble clef, a key signature of one flat, and a 4/4 time signature. The melody consists of quarter notes: F, G, A, B. A box with a treble clef and a 4-measure rest is also present.

D

LAST DANCE - TRPT. 3 - P. 2.

E

Musical notation for the first system, including a treble clef, a key signature of one flat, and a 2-measure rest.

Musical notation for the second system, featuring a melody with accents and a dynamic marking of *mf*.

D.S. AL CODA

CODA

Musical notation for the third system, including a treble clef, a key signature of one flat, and a dynamic marking of *mf*.

RIT. *f*

TRUMPET 4

SLOWLY

LAST DANCE

FLUG.

Section A: Musical notation for the first system, including a treble clef with a key signature of one flat and a dynamic marking of *mp*.

Section A continuation: Musical notation for the second system, including a dynamic marking of *mp* and a box labeled "TO TRUMPET" with a 4-measure rest.

DISCO TEMPO
♩ = 142

Section B: Musical notation for the third system, including a dynamic marking of *mp*.

Section C: Musical notation for the fourth system, including a circled "8" and a dynamic marking of *mp*.

Section D: Musical notation for the fifth system, including a dynamic marking of *mp*.

WARREN BROS.
© 1970

LAST DANCE - TRPT. 4 - P. 2.

E **2** **mf** **2**

8

mf **sf**

CODA **mf** **p** **RIT.**

TROMBONE I

LAST DANCE

SLOWLY

A *mp*

8

p

DISCO TEMPO
♩ = 142

B *mp*

C *mf* *f*

16

D *mf*

LAST DANCE - BONE I - P. 2.

E *mf* 2

8

CODA *mf*

RIT.

TROMBONE 2

LAST DANCE

SLOWLY

A

mp

p

DISCO TEMPO
1=142

B

mp

C

mf

S.

16

D

mf

LAST DANCE - BONE 2 - P. 2.

E

Handwritten musical notation for the first system, featuring a treble clef, a key signature of two flats, and a 2/4 time signature. The notation includes a melody line with a fermata and a dynamic marking of "mf".

8

Handwritten musical notation for the second system, consisting of two staves with complex rhythmic patterns and slurs.

Handwritten musical notation for the third system, including a dynamic marking of "f" and a boxed instruction "D.S. al CODA".

CODA

Handwritten musical notation for the CODA section, featuring a treble clef, a key signature of two flats, and a dynamic marking of "mf".

RIT.

TROMBONE 3

LAST DANCE

SLOWLY

Musical notation for the first system, including a treble clef, key signature of two flats, and a dynamic marking of *mp*. A box labeled 'A' is present on the left.

Musical notation for the second system, including a dynamic marking of *p* and a tempo instruction: **DISCO TEMPO**
 $\text{♩} = 142$

Musical notation for the third system, including a dynamic marking of *mp* and a box labeled 'B' on the left.

Musical notation for the fourth system, including a dynamic marking of *mp*, a circled *f*, and a box labeled 'C' on the left. A measure rest of 16 is indicated.

Musical notation for the fifth system, including a dynamic marking of *mf* and a box labeled 'D' on the left.

WARNER BROS.
© 1978

LAST DANCE - BONE 3 - P. 2.

E

Handwritten musical notation for the first system. It features a treble clef and a key signature of two flats (B-flat and E-flat). The notation includes a series of notes with stems, some marked with accents and slurs. There are also rests and dynamic markings such as *mf*. A large number '2' is written above the first measure.

8

Handwritten musical notation for the second system. It features a treble clef and a key signature of two flats. The notation includes a series of notes with stems, some marked with accents and slurs. There are also rests and dynamic markings such as *mf*. A large number '8' is written above the first measure.

Handwritten musical notation for the third system. It features a treble clef and a key signature of two flats. The notation includes a series of notes with stems, some marked with accents and slurs. There are also rests and dynamic markings such as *mf*. The system ends with a boxed instruction: **D.S. al CODA**.

8

CODA

Handwritten musical notation for the CODA section. It features a treble clef and a key signature of two flats. The notation includes a series of notes with stems, some marked with accents and slurs. There are also rests and dynamic markings such as *mf*.

RIT.

Empty musical staves at the bottom of the page.

TROMBONE 4

LAST DANCE

SLOWLY

A *mp* *8*

p *DISCO TEMPO*
♩ = 142

B *mp*

C *mf* *f* *16*

mf

D *mf*

WARNER BROS.
© 1978

LAST DANCE - BOOK 4 - P. 2.

E

Musical staff with treble clef, key signature of two flats, and a 2-measure rest. The dynamic marking *mf* is present.

Musical staff with treble clef, key signature of two flats, and notes with accents. The dynamic marking *mf* is present.

Musical staff with a 2-measure rest.

Musical staff with treble clef, key signature of two flats, and notes with accents. The dynamic marking *mf* is present.

Musical staff with treble clef, key signature of two flats, and notes with accents. The dynamic marking *mf* is present.

Musical staff with treble clef, key signature of two flats, notes with accents, and a boxed instruction: **D.S. al CODA**. The dynamic marking *mf* is present.

CODA

Musical staff with treble clef, key signature of two flats, notes with accents, and a 2-measure rest. The dynamic marking *mf* is present.

Musical staff with treble clef, key signature of two flats, notes with accents, and a 2-measure rest. The dynamic marking *mf* is present.

f **RT.**

PIANO - VOICE

SLOWLY

LAST DANCE

Introduction for piano. The music is in E-flat major (three flats). The piano part consists of a steady eighth-note accompaniment in the right hand and a bass line in the left hand. The chords are: Eb, Fm/Eb, Eb(m7), and Ab/Eb.

A

First system of the song. The vocal line starts with the lyrics: "LAST DANCE LAST DANCE FOR LOVE — YES IT'S MY". The piano accompaniment continues with the same eighth-note pattern. Chords are: Eb(m7), Fm/Eb, Eb(m7), and Bb+.

Second system of the song. The vocal line continues with: "LAST CHANCE FOR ROMANCE TO — NIGHT — I". The piano accompaniment continues. Chords are: Eb(m7), Fm/Eb, Db/Eb, and Eb7.

Third system of the song. The vocal line concludes with: "NEED YOU BY ME BE — SIDE ME — TO GUIDE ME TO". The piano accompaniment continues. Chords are: Ab(m7), Bb/Ab, Gm, and Cm.

LAST DANCE - PIANO-VOICE - P. 2

Handwritten musical score for the first system. It consists of three staves: a vocal line in treble clef with a key signature of two flats (Bb, Eb) and a 4/4 time signature, and two piano accompaniment staves (treble and bass clefs). The lyrics are: "HOLD ME TO SCOLD ME 'CAUSE WHEN I'M BAD I'M SO SO BAD". The piano part includes chords: Abmaj7, Bb/Ab, G7sus4, and G7. A fermata is placed over the final notes of the vocal line.

DISCO TEMPO
♩ = 142

Handwritten musical score for the second system, continuing the piano accompaniment from the first system. It features two staves (treble and bass clefs) with chords Cm7 and F7. The lyrics "SO" are written below the vocal line.

B

Handwritten musical score for the third system, marked with a boxed 'B'. It consists of three staves: a vocal line with lyrics "LET'S DANCE THE LAST DANCE LET'S DANCE THE LAST DANCE SO", and two piano accompaniment staves. The piano part includes chords: Eb/Bb, Ab/Bb, Eb/Bb, and Ab/Bb.

Handwritten musical score for the fourth system. It consists of three staves: a vocal line with lyrics "LET'S DANCE THE LAST DANCE TO NIGHT", and two piano accompaniment staves. The piano part includes chords: Eb/Bb, Ab/Bb, Am7b5, and Ab/Bb. A fermata is placed over the final notes of the vocal line.

LAST DANCE - PIANO-VOICE - P. 2.

Handwritten musical notation for the first system. It includes a treble clef, a key signature of two flats (Bb, Eb), and a common time signature (C). The lyrics are: "LAST DANCE FOR LOVE YES IT'S MY". The chords are: Eb MAJ, Fm/Eb, Eb MAJ, and Bb+?

Handwritten musical notation for the second system. The lyrics are: "LAST CHANCE FOR RO-MANCE TO NIGHT OH I". The chords are: Eb MAJ, Fm/Eb, Bb/Eb, and Eb?

Handwritten musical notation for the third system. The lyrics are: "NEED YOU BY ME BE SIDE ME TO GUIDE ME TO". The chords are: Ab MAJ, Bb/Ab, Gm, and Cm.

Handwritten musical notation for the fourth system. The lyrics are: "HOLD ME TO SCOLD ME 'CAUSE WHEN I'M BAD I'M SO SO BAD SO". The chords are: Ab MAJ, Bb/Ab, G² SUS. 4, G, Cm, and F.

Handwritten musical notation for the fifth system. The lyrics are: "LET'S DANCE THE LAST DANCE LET'S DANCE THE LAST DANCE SO". The chords are: Eb/Bb, Ab/Bb, Eb/Bb, and Ab/Bb.

LET'S DANCE THE LAST DANCE TO NIGHT

Chords: Eb/Bb, Ab/Bb, Cm, Cm/Bb

Diagram: [D]

Annotation: [IX ONLY]

OH ARE YOU BA-BY

Chords: Abmaj7, Cm, Cm/Bb

RIGHT FOR ME CAN'T YOU SEE BOP BOP BA-DA I CAN'T BE SURE THAT YOU'RE THE

Chords: Abmaj7, Fm7, Gm7

Diagram: [E]

ONE FOR ME WELL WELL WELL WELL ALL THAT I ASK IS THAT YOU

Chords: Abmaj7 (wow pedal fix), Fm7, Gm7

DANCE WITH ME YEAH WHILE THE TEN-OR MAN BLOWS TRUMPET MAN BLOWS

Chords: Ebmaj7, Eb, Cm7, Ab, Bb7

LAST DANCE - PIANO-VOICE - P-5.

Handwritten piano accompaniment for the first system. The music is written on a grand staff with two staves. The notes are mostly whole rests. The chord progression is: Cm, Bb6, Ab MAJ7, G7, Cm, Bb6, Ab MAJ7, G7. The bottom staff contains rhythmic slash marks.

Handwritten piano accompaniment for the second system, identical to the first system. It features the same chord progression: Cm, Bb6, Ab MAJ7, G7, Cm, Bb6, Ab MAJ7, G7. The system ends with a double bar line and repeat dots.

Musical notation for the 'D.S. al CODA' section. The top staff is a treble clef with a whole rest. The bottom staff has a 7/8 time signature and contains a sequence of notes: quarter notes G, A, Bb, C, followed by a half note D, and a whole note E. Above the notes are question marks. A box labeled 'D.S. al CODA' is placed over the right side of the system. Below the notes are some handwritten markings, including a '4.' and a '4'.

Musical notation for the first line of lyrics. The top staff contains the lyrics: "LAST DANCE TO NIGHT". The bottom staff has a 7/8 time signature and contains notes: quarter notes G, A, Bb, C, followed by a half note D, and a whole note E. Chords are written below the notes: Ab/Bb, Am7b5, Ab MAJ7, and Eb/C. The system ends with a double bar line.

Musical notation for the second line of lyrics. The top staff contains the lyrics: "NIGHT". The bottom staff has a 7/8 time signature and contains notes: quarter notes G, A, Bb, C, followed by a half note D, and a whole note E. Chords are written below the notes: Ab/Bb, E9, and Eb/C. The system ends with a double bar line and a 'RIT.' marking.

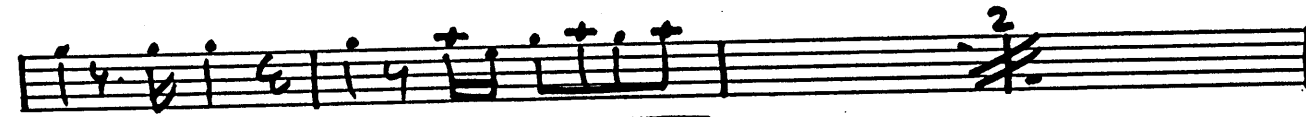
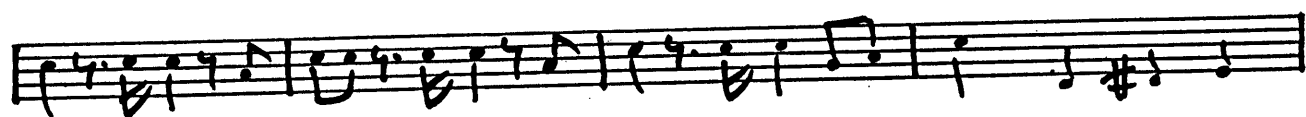
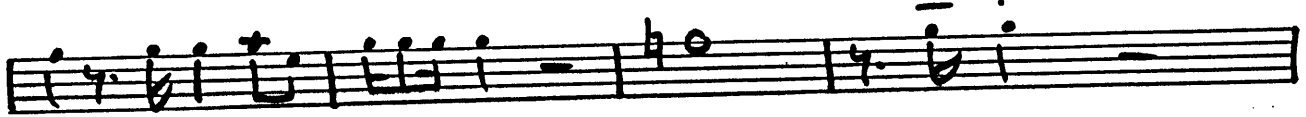
BASS

SLOWLY

LAST DANCE



DISCO TEMPO
♩ = 142



WARNER BROS.
© 1978

LAST DANCE - BASS - P. 2.

D

Handwritten musical notation for section D, first two staves. The first staff begins with a treble clef, a key signature of two flats (B-flat and E-flat), and a 4/4 time signature. The music consists of eighth-note chords and quarter notes. The second staff continues the pattern and ends with a double bar line.

E

Handwritten musical notation for section E, seven staves. The first staff begins with a treble clef, a key signature of two flats, and a 4/4 time signature. The music features a mix of eighth and sixteenth notes, often beamed together. The second staff continues with similar rhythmic patterns. The third staff has a few notes followed by a whole rest. The fourth, fifth, sixth, and seventh staves continue with dense eighth-note patterns, some with accents and slurs.

Handwritten musical notation for section E, eighth staff. It starts with a few notes, followed by a double bar line and the instruction "D.S. al CODA" enclosed in a rectangular box.

CODA

Handwritten musical notation for the CODA section, two staves. The first staff begins with a treble clef, a key signature of two flats, and a 4/4 time signature. The music consists of quarter and eighth notes. The second staff continues with similar notation and ends with a double bar line. Below the second staff is the instruction "RIT." with a wavy line underneath it.

DRUMS

SLOWLY

LAST DANCE

Musical staff with a treble clef, a common time signature (C), and a dynamic marking of *mp*. The staff contains a sequence of notes and rests, with a double bar line and repeat signs.

Musical staff labeled **A** with a dynamic marking of *mp*. It includes the instruction "PLAY 14" and contains a sequence of notes and rests.

Musical staff with a dynamic marking of *mp*. It includes the instruction "DISCO TEMPO" and " $\text{♩} = 142$ ". The staff contains a sequence of notes and rests.

Musical staff labeled **B** with a dynamic marking of *mp*. It contains a sequence of notes and rests, with a double bar line and repeat signs.

Musical staff with a dynamic marking of *mp*. It contains a sequence of notes and rests, including some triplets.

Musical staff labeled **C** with a dynamic marking of *mp*. It includes a circled *f* marking and the instruction "PLAY 15". The staff contains a sequence of notes and rests.

Musical staff with a dynamic marking of *mp*. It includes a circled *f* marking and the instruction "PLAY 4". The staff contains a sequence of notes and rests.

Musical staff labeled **D** with a dynamic marking of *mf*. It contains a sequence of notes and rests, with a double bar line and repeat signs. The word "FILL" is written above the staff.

Musical staff with a dynamic marking of *mf*. It contains a sequence of notes and rests, with a double bar line and repeat signs. The word "FILL" is written above the staff.

WARNER BROS.
© 1978

LAST DANCE - DRUMS - P. 2.

E
MP
PLAY 4
FILL
MS
PLAY 15
D.S. al CODA

CODA
MS
RIT.

GUITAR

SLOWLY

LAST DANCE

A

16

DISCO TEMPO
♩ = 142

2

B

C

5

D

WARNER BROS.
© 1978

LAST CHANCE - GUITAR - P. 2.

E

Handwritten guitar notation for the main section of the piece. It consists of six staves. The first staff begins with a treble clef, a key signature of one flat (Bb), and a 4/4 time signature. The first measure contains a guitar chord diagram for Fm7. The second measure contains a guitar chord diagram for Gm7. The third measure contains a guitar chord diagram for Abmaj7, with the handwritten note "(wow fill)" written above it. The fourth measure contains a whole rest. The second staff contains guitar chord diagrams for Fm7, Gm7, Ebmaj7, Eb, Cm7, Ab, and Bb7. The third staff contains guitar chord diagrams for Cm, Bb6, Abmaj7, and G7. The fourth staff contains guitar chord diagrams for Cm, Bb6, Abmaj7, and G7. The fifth staff contains guitar chord diagrams for Cm, Bb6, Abmaj7, and G7. The sixth staff contains a melodic line with four eighth notes, followed by a guitar chord diagram for Ab/Bb, and ends with a double bar line and the instruction "D.S. al CODA" in a box.

CODA

Handwritten guitar notation for the CODA section. It consists of two staves. The first staff begins with a treble clef, a key signature of one flat (Bb), and a 4/4 time signature. The first measure contains a guitar chord diagram for Ab/Bb. The second measure contains a guitar chord diagram for AM7b5. The third measure contains a guitar chord diagram for Abmaj7. The fourth measure contains a guitar chord diagram for Eb/C. The second staff contains a melodic line with eighth notes and quarter notes, ending with a double bar line and the instruction "RIT." written below it.

PIANO - VOICE

SLOWLY

LAST DANCE

Chords: Eb, Fm/Eb, Eb(maj7), Ab/Eb

A

LAST DANCE LAST DANCE FOR LOVE — YES IT'S MY

Chords: Eb(maj7), Fm/Eb, Eb(maj7), Bb+

LAST CHANCE FOR RO-MANCE TO — NIGHT — I

Chords: Eb(maj7), Fm/Eb, Db/Eb, Eb7

NEED YOU BY ME BE-SIDE ME — TO GUIDE ME TO

Chords: Ab(maj7), Bb/Ab, Gm, Cm

LAST DANCE - PIANO-VOICE P. 7

Handwritten musical score for the first system. It consists of three staves: a vocal line in treble clef with a key signature of two flats (Bb) and a 4/4 time signature, and two piano accompaniment staves (treble and bass clefs) with the same key signature. The lyrics are: "HOLD ME TO SCOLD ME 'CAUSE WHEN I'M BAD I'M SO SO BAD". The piano part features chords: Abmaj7, Bb/Ab, and G7sus4 G7. A triplet of eighth notes is marked above the vocal line in the second measure.

Handwritten musical score for the second system. It consists of three staves: a vocal line in treble clef with a key signature of two flats (Bb) and a 4/4 time signature, and two piano accompaniment staves (treble and bass clefs) with the same key signature. The lyrics are: "SO". The piano part features chords: Cm7 and F7. A tempo marking "DISCO TEMPO" and a metronome marking "♩ = 142" are written above the piano staves.

Handwritten musical score for the third system, labeled with a circled 'B' in the left margin. It consists of three staves: a vocal line in treble clef with a key signature of two flats (Bb) and a 4/4 time signature, and two piano accompaniment staves (treble and bass clefs) with the same key signature. The lyrics are: "LET'S DANCE THE LAST DANCE LET'S DANCE THE LAST DANCE SO". The piano part features chords: Eb/Bb, Ab/Bb, Eb/Bb, and Ab/Bb.

Handwritten musical score for the fourth system. It consists of three staves: a vocal line in treble clef with a key signature of two flats (Bb) and a 4/4 time signature, and two piano accompaniment staves (treble and bass clefs) with the same key signature. The lyrics are: "LET'S DANCE THE LAST DANCE TO NIGHT". The piano part features chords: Eb/Bb, Ab/Bb, Am7b5, and Ab/Bb.

LAST DANCE - PIANO-VOICE - P. 3.

C **(S)**

LAST DANCE LAST DANCE FOR LOVE YES IT'S MY

E^b MAJ[?] F^m E^b E^b MAJ[?] B^b +

LAST CHANCE FOR RO-MANCE TO NIGHT OH I

E^b MAJ[?] F^m E^b D^b E^b E^b ?

NEED YOU BY ME BE SIDE ME TO GUIDE ME TO

A^b MAJ[?] B^b A^b G^m C^m

HOLD ME TO SCOLD ME 'CAUSE WHEN I'M MAD I'M SO SO RAP SO

A^b MAJ[?] B^b A^b $G^?$ SUS. 4 $G^?$ C^m $F^?$

LET'S DANCE THE LAST DANCE LET'S DANCE THE LAST DANCE SO

E^b B^b A^b B^b E^b B^b A^b B^b

LET'S DANCE THE LAST DANCE TO NIGHT

IX ONLY

Chords: Eb Bb, Ab Bb, Cm, Cm Bb

OH ARE YOU BA-BY

Chords: Abmaj7, Cm, Cm Bb

RIGHT FOR ME CAN'T YOU SEE BOP BOP BA DA I CAN'T BE SURE THAT YOU'RE THE

Chords: Abmaj7, Fm7, Gm7

ONE FOR ME WELL WELL WELL WELL ALL THAT I ASK IS THAT YOU

Chords: Abmaj7 (wow pedal fix), Fm7, Gm7

DANCE WITH ME YEAH WHILE THE TEN OR MAN BLOWS TRUM PET MAN BLOWS

Chords: Ebmaj7 Eb, Cm7, Ab, Bb7

LAST DANCE - PIANO-VOICE - P-5.

Handwritten piano accompaniment for the first system. It consists of two staves. The upper staff contains a series of horizontal lines, likely representing a melodic line. The lower staff contains a series of diagonal lines, representing a bass line. Chords are written below the lower staff: Cm, Bb6, A^bMAJ⁷, G⁷, Cm, Bb6, A^bMAJ⁷, G⁷.

Handwritten piano accompaniment for the second system, identical to the first system. It consists of two staves with a melodic line on top and a bass line on the bottom. Chords are: Cm, Bb6, A^bMAJ⁷, G⁷, Cm, Bb6, A^bMAJ⁷, G⁷.

Musical notation for the end of the piece. It shows a treble clef and a bass clef. The treble clef staff has a series of notes with question marks above them. The bass clef staff has notes with a '4.' below them. A box contains the text 'D.S. al CODA'. Below the bass clef staff, there are some handwritten notes and a 'CODA' box.

Vocal line for the first part of the song. The lyrics are 'LAST DANCE TO NIGHT TO'. The notes are written on a staff. Chords are written below: A^bB^b, A^m7 b5, A^bMAJ⁷, E^b/C.

Piano accompaniment for the final part of the piece. It shows a treble clef and a bass clef. The treble clef staff has notes with a '4.' below them. The bass clef staff has notes with a '4.' below them. Chords are written below: A^bB^b, E⁹. The word 'RIT.' is written below the bass clef staff.